

ApexN.R.G Demonstration Unit

Developed by MedicNRG, this unit is for training, seminars, and marketing demonstrations.

See the next 3 slides for operating instructions.

1

Test tube with cavity for testing tooth

The base



Fill the tube with salt water

(about 1 gram salt : to 125-150 gram water. About 1/2 glass of water)
Regular tap water will not give an accurate result.



transparent
testing tooth



The covered unit
ready for use

Connect the lip hook socket to the stainless steel pin on the test tube, and connect the file holder to the file (NiTi or regular)

2

Locate the tube in the centre



3



4

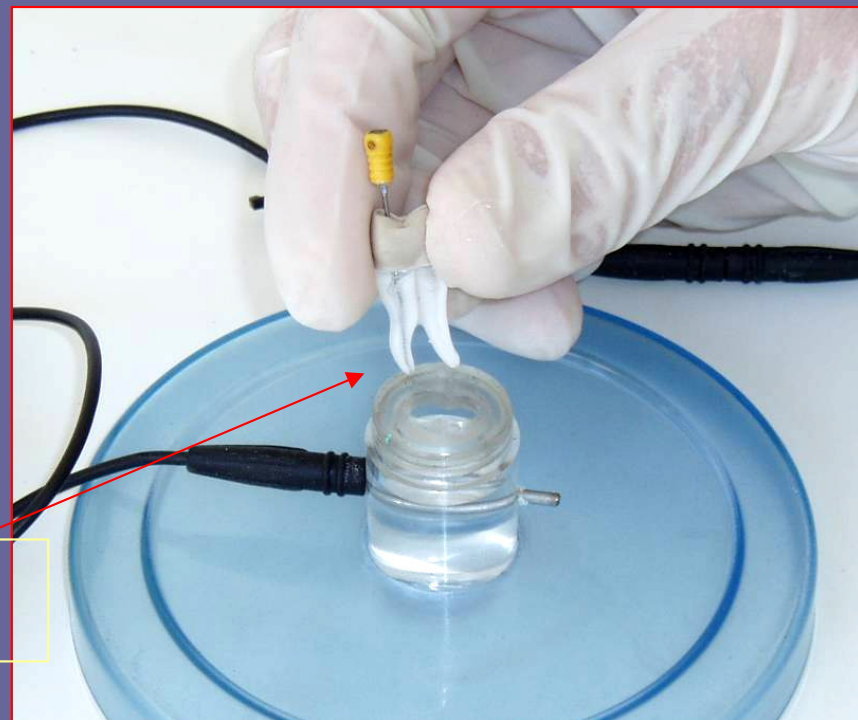
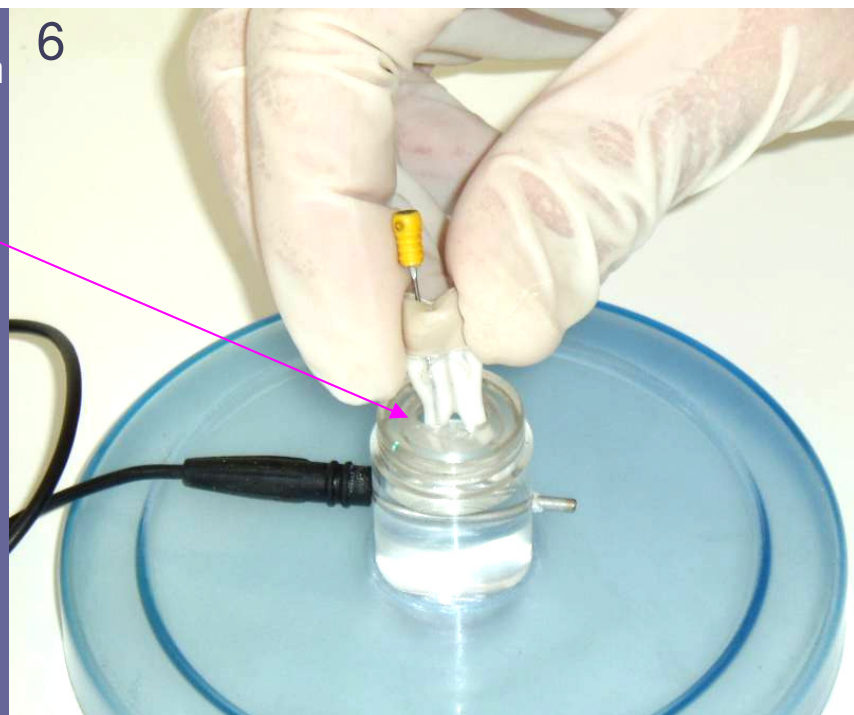
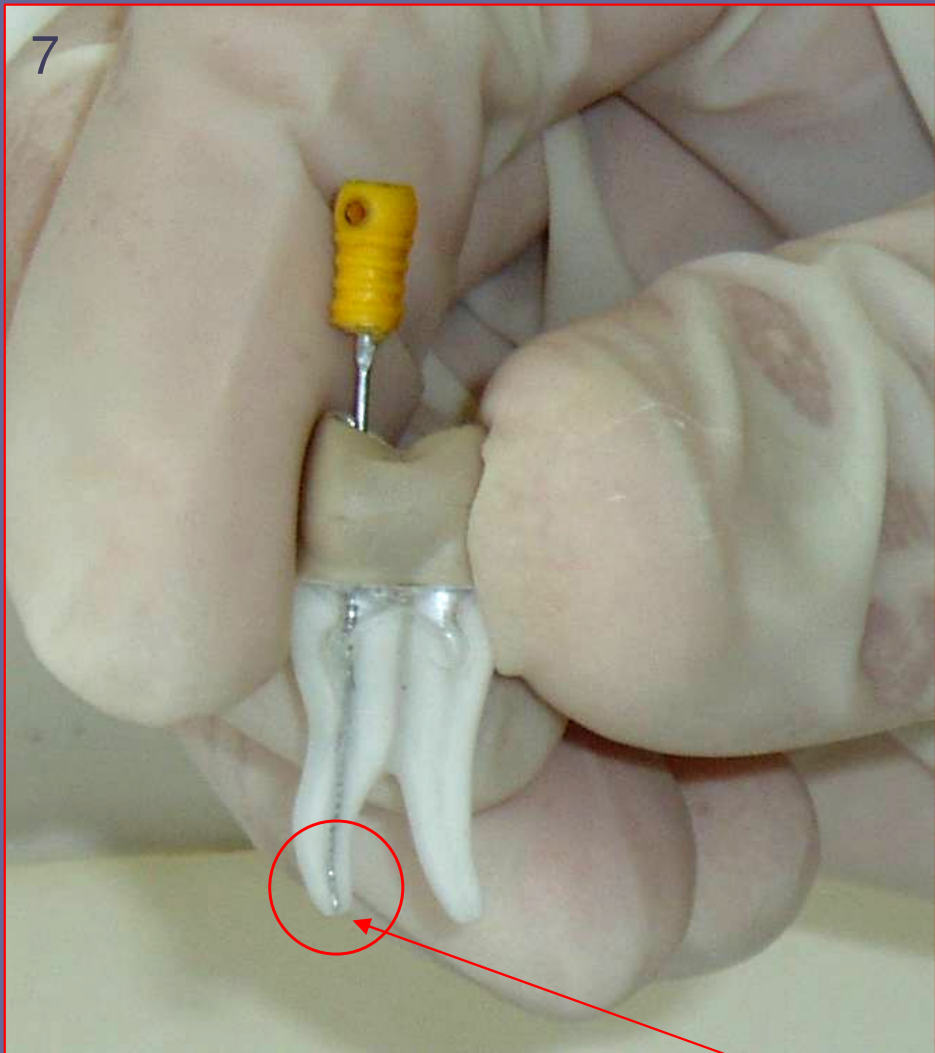


Turn the file (0.15 or 0.20 mm) slowly clockwise. Move towards the end of the canal (apex). Measure the distance by way of the five led's on the ApexNRG. Once you reached the apex, the red LED will flash, along with the alarm sound. Remove the tooth from the tube test (see next slide) and you will see that the file has reached the exact location of the apex.

5



Remove the tooth to see the location of the file upon ApexNRG's registration of the apex:
red LED, 0.0 mm from the apex



Now that the tooth has been removed, you can see that the file has reached the apex exactly as the ApexNRG shows 0.0 mm